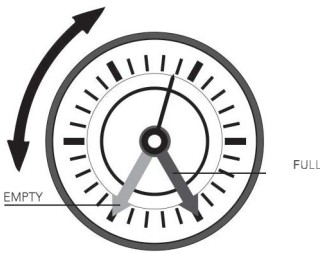


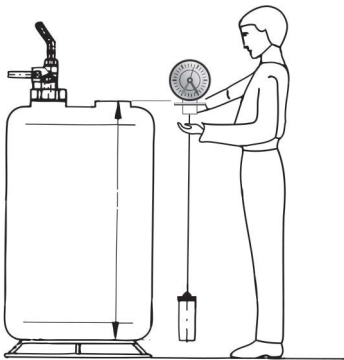
**Before installing your Tank Gauge, it is important to calibrate it for use. This will allow you to set your own tank's "Empty" and "Full" positions and quickly see your tank's water level.**



## Calibration



1. Carefully remove the front clear face from the tank gauge to enable access to the moveable "Empty" and "Full" indicators.
2. Select an installation site on your tank for the Tank Gauge and mark it. It is preferable that this is a flat area and that once installed will allow you to view the Tank Gauge face easily.
3. While maintaining the same height and keeping the weight outside of the tank, extend the weight so it is level with the bottom of your tank.
4. Lift the weight so it is level with the overflow on your tank and move the green "Full" indicator to where the water level indicator is pointing.
5. Tank Gauge is now calibrated. Replace the clear faceplate.



## Installation

1. Drill a 1-1/4" or 1-1/2" hole into your tank at the previously marked installation site.
2. Lower the weight through this hole and sit the Tank Gauge on your tank.
3. Using the supplied screws, secure the Tank Gauge to your tank.
4. Your Tank Gauge is now installed and ready for use.

